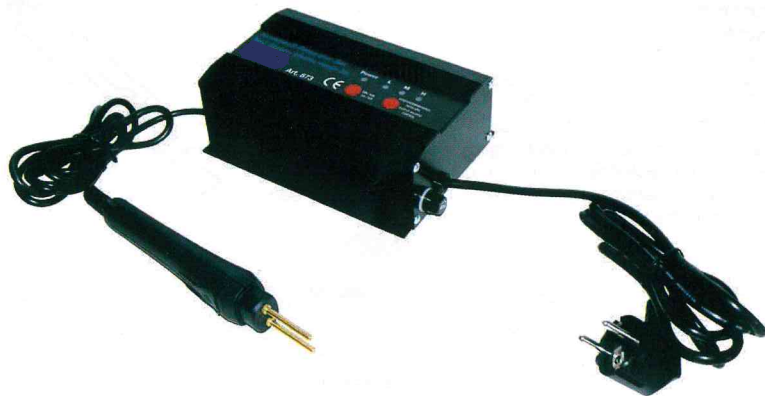


HOT STAPLER PLASTIC REPAIR KIT



Thank you very much for choosing "HOT STAPLER - PLASTIC REPAIR KIT".

This product is designed for equipment, which carries out repair reinforcement of the plastic article etc. Please read this instruction manual carefully before using and always keep this manual within easy reach.

CONTENTS

1. SAFETY AND HANDLING PRECAUTIONS
2. COMPONENT NAMES
3. SPECIFICATIONS
4. HOW TO OPERATE

1. SAFETY AND HANDLING PRECAUTIONS

Please follow this manual strictly for your safety.

WARNING

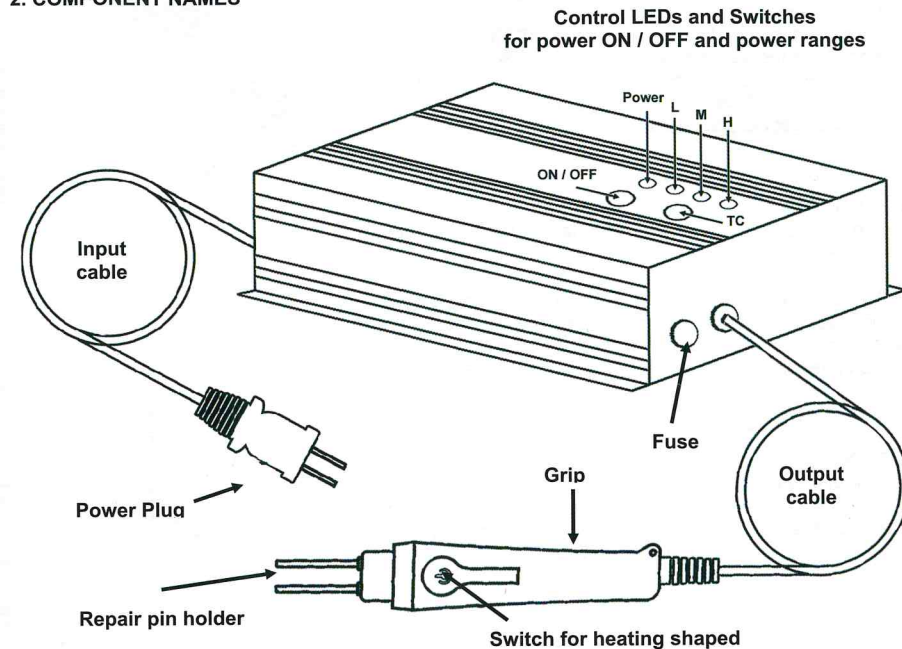
Once a pin is set to a switch grip and switch is turned on, the temperature of a pin will become 100°C ~ 200°C. If handling is mistaken, it may cause burn, blindness, and a fire.

- Wear heat-resistant gloves when working.
- Before setting the pin, make sure that tip of the switch grip is cold.
- Do not touch heating repair pin with bare hands when it is set in the switch grip.
- Do not use near combustible materials.
- Since it becomes high temperature, let people around you know it is dangerous.
- Do not use with wet hands.
- Do not soak this product in water.
- Do not use in wet locations.
- When you suspend working, and leave the place, turn off the switch then make sure that the tip of the switch grip has fully got cold.
- Repairing objects get high temperature. Please be aware of burning by melted plastic.

Please observe the following notes to avoid accident or breakdown.

- This product was designated for plastic repair. Do not use it for purposes other than the original usage.
- The device may be used only with suitable brackets.
- Please carry out use within 3 minutes, with a switch grip switched on.
- The unit must be repaired only by authorized service personnel.
- When you plug in and / or disconnect the plug, please hold the plug itself. (Do not pull the cable.)

2. COMPONENT NAMES



3. SPECIFICATIONS

Power supply: 220 - 240V AC 50 / 60Hz

Power consumption: 12.6 watts

Output voltage: L = 0,62V (4,9A)

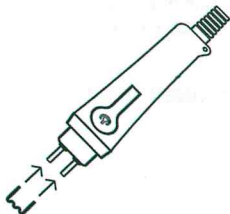
M = 0,66V (5,2A)

H = 0,68V (5,6A)

Fuse: 500 mA (5 x 20 mm)

4. HOW TO OPERATE

1. Plug in to 240V outlet.
2. Press ON / OFF button
3. Press the range button (**TC**) for several times until the desired power level is reached.
 - L** ----- Thin plastic (bumper etc.)
 - M** ----- To about 5mm thick plastic (spot light etc.)
 - H** ----- Thick or hard plastic
4. Choose suitable heating repair pin and set it to tip of the grip.
5. Please form the part to repair as original shape.
6. Presses the switch button on the grip and hold about 10 seconds until the pin is hot enough to weld. Then press the pin gently against the place to repair.



WARNING

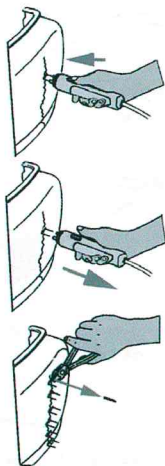
When heating repair pin is pressed too hard, it may penetrate the object. Please press by slight power.

7. When the pin is taken half way to the repairing part, release the switch button on the grip then wait for a few seconds until repair part gets firm. After that draw the pin out of the grip.
8. When a repairing part reaches long and wide, please repeat the procedure at intervals of 1 - 3 cm.
9. Cut off the pin using pliers.

CAUTION

Be aware of fragments. Wear safety goggles when you cut off pins.

10. Grind off the excess of the pins using sander. Apply putty and paint if you wish to finish the surface more finely.



DISPOSAL

An inappropriate recycling of this device leads to serious danger for our health and the environment. Never recycle this electrical unit with your domestic waste. Collect worn electrical devices and recycle them at your local collecting point.

